

PART OF N.W. 1/4, SEC. 20, T. 7 N., R. 1 W., S.L.B. & M.
MAJESTIC HEIGHTS SUBDIVISION NO. 8
IN CITY OF PLEASANT VIEW

102

TAXING UNIT: II

PREFIX: 16-102

LOTS 155-167
SCALE = 1"=60'

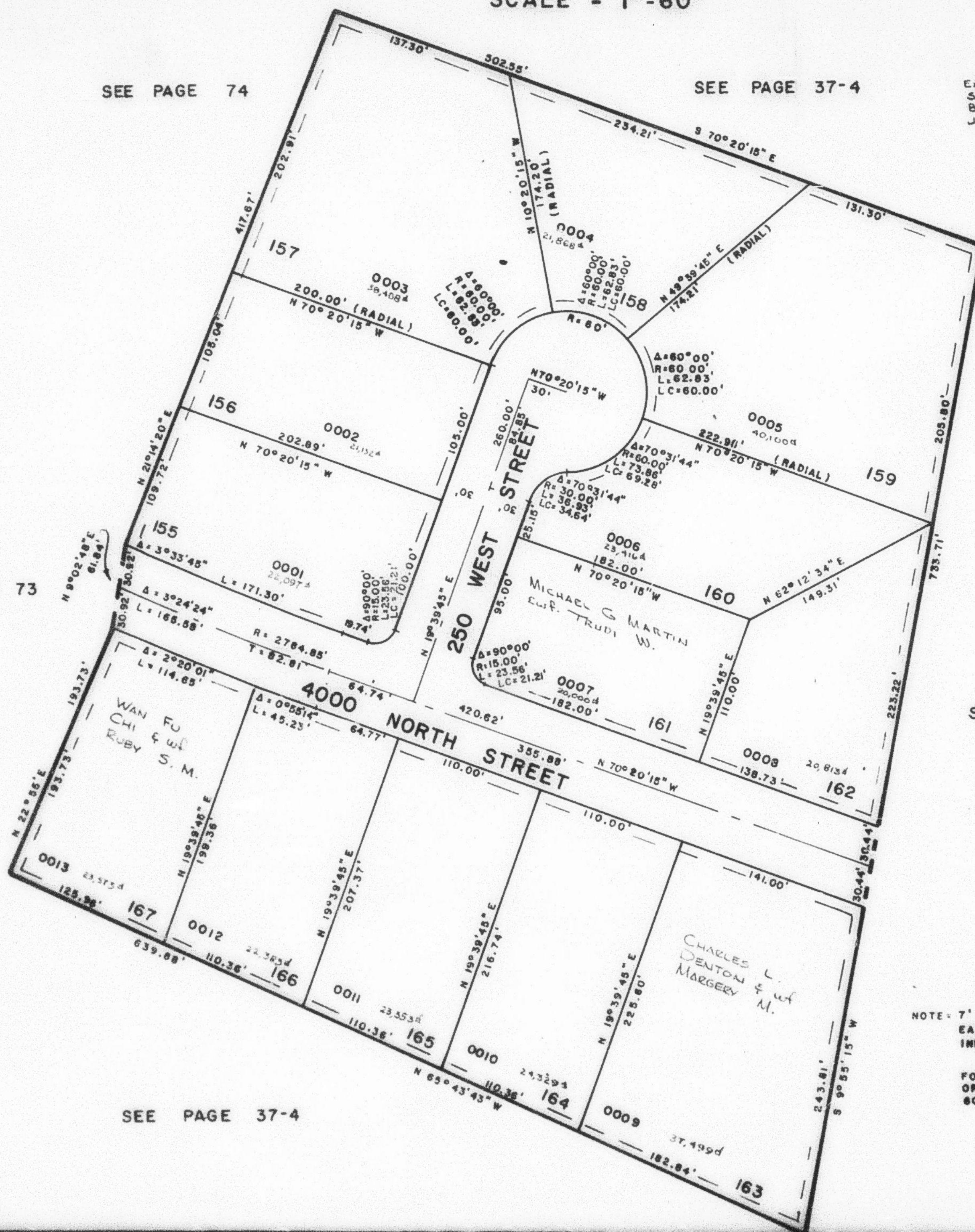
SEE PAGE 74

SEE PAGE 37-4

EXCEPT WHERE OTHERWISE
SHOWN ALL LOTS OWNED
BY V. JAY WADMAN & WIFE
JUNE C.

SEE PAGE 73

SEE PAGE 37-4



NOTE: 7' UTILITY AND DRAINAGE EASEMENT
EACH SIDE OF PROPERTY LINE AS
INDICATED BY DASHED LINES.

FOR COMPLETE ENCL. DATA SEE
ORIG. DED. PLAT IN BOOK 21, PAGE
60.

SEE PAGE 37-4

REC 6-28-78
DRN 7-78 A.M.